

Corrente



STILNOVO

l'arte del decorativo italiano



Corrente è una pregiata finitura decorativa all'acqua per interni che permette la creazione di ambienti unici ed affascinanti, conferendo agli ambienti un elegante aspetto estetico antichizzato. La speciale formulazione consente di realizzare preziosi effetti di colore adatti a qualsiasi ambiente.



Italia, Toscana: Corrente L



FONDO LISCIO + C.020



FONDO LISCIO + C.082



STILNOVO
l'arte del decorativo italiano



Letteraria del Duecento, Poesia



C.001



C.002



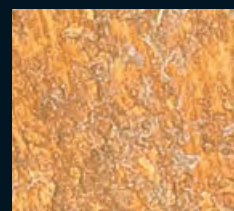
C.003



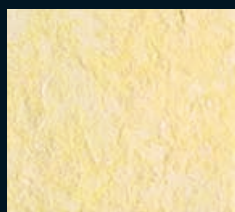
C.004



C.005



C.006



C.007



C.008



C.009



C.010



C.011



C.012



C.013



C.014



C.015



C.016



C.017



C.018



C.019



C.020



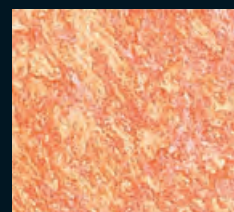
C.021



C.022



C.023



C.024



C.025



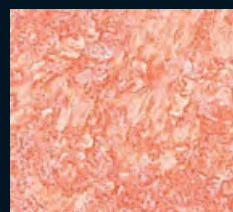
C.026



C.027



C.028



C.029



C.030



C.031



C.032



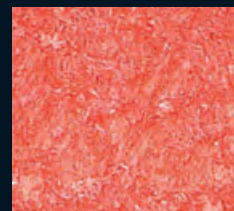
C.033



C.034



C.035



C.036

e Parole di Carattere Nobile



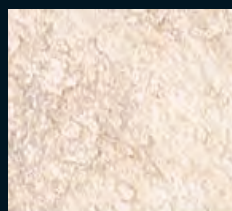
C.037



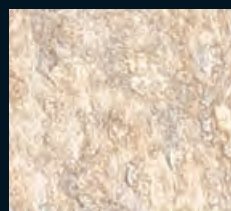
C.038



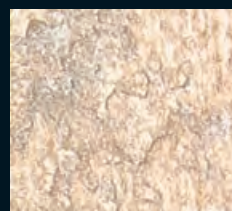
C.039



C.040



C.041



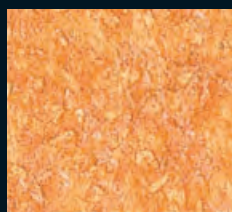
C.042



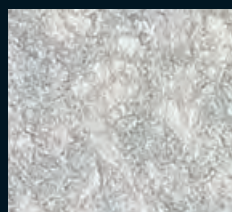
C.043



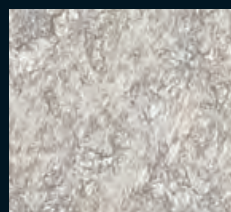
C.044



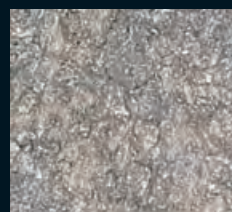
C.045



C.046



C.047



C.048



C.049



C.050



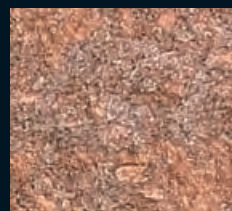
C.051



C.052



C.053



C.054



C.055



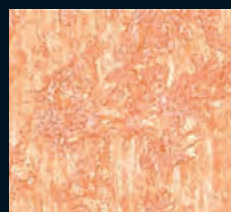
C.056



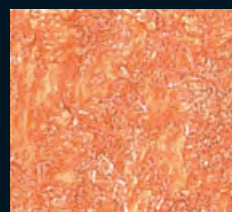
C.057



C.058



C.059



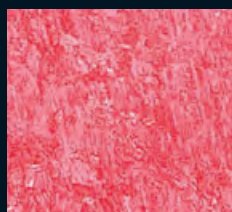
C.060



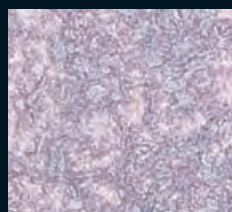
C.061



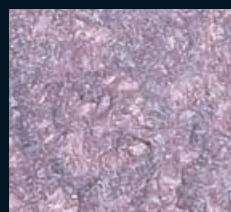
C.062



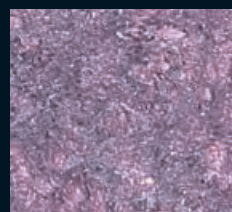
C.063



C.064



C.065



C.066



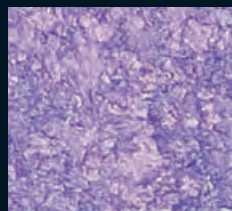
C.067



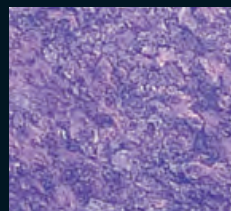
C.068



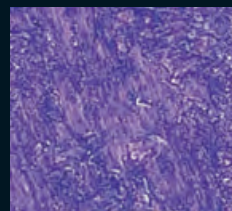
C.069



C.070



C.071



C.072

e Raffinato.

La presente cartella è di tipo fotografico, pertanto puramente indicativa.
Rappresenta una riproduzione delle reali applicazioni e ha il solo scopo di orientare alla scelta.
Non può essere oggetto di contestazione.
Per la scelta ottimale dei colori fare riferimento alla cartella con il prodotto applicato.



C.073



C.074



C.075



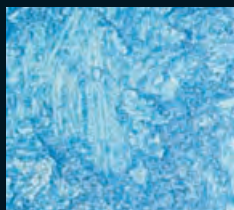
C.076



C.077



C.078



C.079



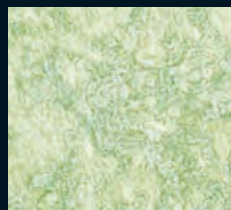
C.080



C.081



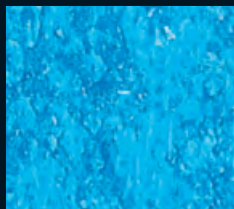
C.082



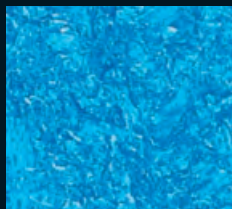
C.083



C.084



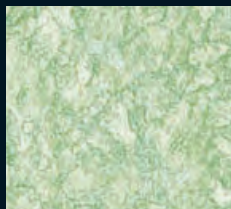
C.085



C.086



C.087



C.088



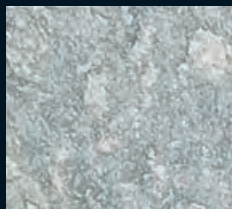
C.089



C.090



C.091



C.092



C.093



C.094



C.095



C.096



C.097



C.098



C.099



C.100



C.101



C.102



C.103



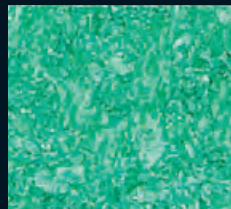
C.104



C.105



C.106



C.107



C.108

Corrente is a stylish water based decorative finish for interiors, allowing you to create elegant antique-finish environments.

The particular innovative formulation containing flakes creates precious colour effects giving the surface a particular antique-finish effect with high resistance and washability.



 ITA

CARATTERISTICHE DEL PRODOTTO

Finitura decorativa all'acqua per interni. Conferisce agli ambienti un elegante aspetto estetico antichizzato.

PREPARAZIONE DEL SUPPORTO

Per rendere l'effetto estetico finale uniforme è necessario regolare l'assorbimento del supporto applicando con pennello o rullo il prodotto FONDO LISCIO.


APPLICAZIONE DEL PRODOTTO


IL PRODOTTO SI APPLICA IN 1 STRATO:

intingendo il pennello "spalter" e passandolo a pennellate incrociate evitando riquadrature nette. Riprendere la lavorazione fino a raggiungere la parte appena trattata con l'attrezzo scarico in modo da evitare giunte evidenti ed antiestetiche. Dopo 5 minuti, e comunque prima della completa essiccazione, ripassare la superficie con l'apposita spatola in plastica esercitando una leggera pressione. La quantità di materiale impiegato, la dimensione, la forma e l'intensità delle pennellate determinano l'effetto estetico finale.

DATI TECNICI

Resa indicativa: 8-10 m²/L per strato. **Diluizione:** pronto all'uso. **Essiccazione:** Secco al tatto: 1 ora (i tempi possono variare in base alle condizioni ambientali).

 ENG

PRODUCT FEATURES

Water based decorative finishing for interiors. Available in gold base and silver base.

SURFACE PREPARATION

To make the final aesthetic effect uniform it is necessary to adjust the absorbency of the support by applying the smooth primer FONDO LISCIO.


APPLICATION OF THE PRODUCT


THE PRODUCTS MUST BE APPLIED IN 1 COAT:

with "spalter" brush spreading the product crossing the strokes on the suitably prepared surface. The final aesthetic aspect depends on the quantity of product applied, the brush dimensions, the width and intensity of the strokes.

After 5 minutes, anyhow before the product completely dries out, go over the painted surface with the special plastic spatula pressing lightly.

TECHNICAL DATA

Average spreading capacity: 8-10 m²/L. per coat. **Thinning:** ready to use. **Drying time:** Dry to touch: 1 hour (time can change due the weather conditions).



STILNOVO
l'arte del decorativo italiano

PPG Univer S.p.a. - Via Monte Rosa, 7
28010 Cavallirio (Novara) - Italy
Tel. +39 0163 806.611 - Fax: +39 0163 806.696
www.stilnovodecorativo.it

