

Antiche Trame

*Suggerimenti cromatiche
ad effetto policromatico*





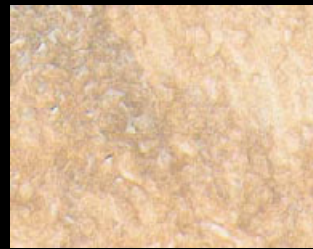
64 - 500 ml SPECTRA 4

Antiche Trame *E SPECTRA* EFFETTO POLICROMATICO PERLESCENTE

Per ottenere un magico effetto perlato adatto ad impreziosire le pareti degli ambienti piu' prestigiosi sono qui presentati alcuni esempi di colorazione di un contenitore di 2,5 litri di ANTICHE TRAME con i nostri colori acrilici perlescenti SPECTRA. Il ciclo applicativo e' descritto sul retro della cartella.

ANTICHE TRAME WITH SPECTRA POLYCHROMATIC PEARLESCENT EFFECT

To obtain a magic pearlescent effect suitable to embellish the walls of the most prestigious environments, here there are some patterns of coloring one 2,5 litres package of ANTICHE TRAME with our pearlescent acrylic colours SPECTRA. The application instructions are described on the back of the colour-card.



65 - 500 ml SPECTRA 2



66 - 500 ml SPECTRA 3



67 - 500 ml SPECTRA 8



68 - 500 ml SPECTRA 7



69 - 500 ml SPECTRA 5



70 - 120 ml SPECTRA 11

SPECTRA:
Idrocolori acrilici
perlescenti
SPECTRA:
water-based acrylic
"pearlescent" colours

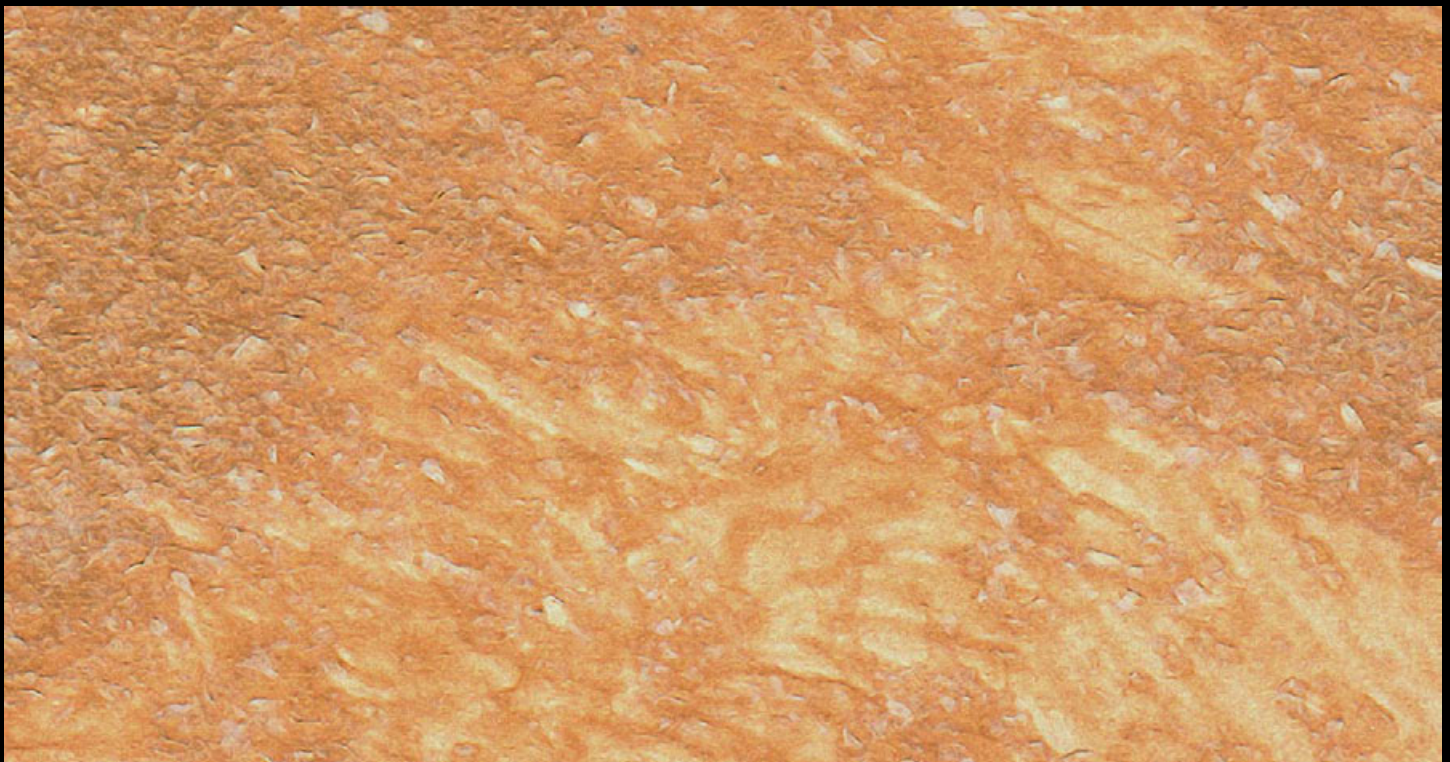


71 - 500 ml SPECTRA 6



72 - 500 ml SPECTRA 9

Confezioni:
60 ml, 500 ml.
Packaging:
60 ml, 500 ml.



55 - 500 ml CYBERLUX 2



56 - 500 ml CYBERLUX 10



57 - 500 ml CYBERLUX 11



58 - 500 ml CYBERLUX 5



59 - 500 ml CYBERLUX 7



60 - 500 ml CYBERLUX 9



61 - 500 ml CYBERLUX 3



62 - 500 ml CYBERLUX 1



63 - 500 ml CYBERLUX 4

Antiche Trame *E* CYBERLUX EFFETTO POLICROMATICO METALLESCENTE

Per ottenere un magico effetto metallico adatto ad impreziosire le pareti degli ambienti piu' prestigiosi sono qui presentati alcuni esempi di colorazione di un contenitore di 2,5 litri di ANTICHE TRAME con i nostri colori acrilici metallici CYBERLUX. il ciclo applicativo e' descritto sul retro della cartella.

ANTICHE TRAME WITH CYBERLUX
POLYCHROMATIC METALLIC EFFECT

To obtain a magic metallic effect suitable to embellish the walls of the most prestigious environments, here there are some patterns of coloring one 2,5 litres package of ANTICHE TRAME with our metallic acrylic colours CYBERLUX. The application instructions are described on the back of the colour-card.

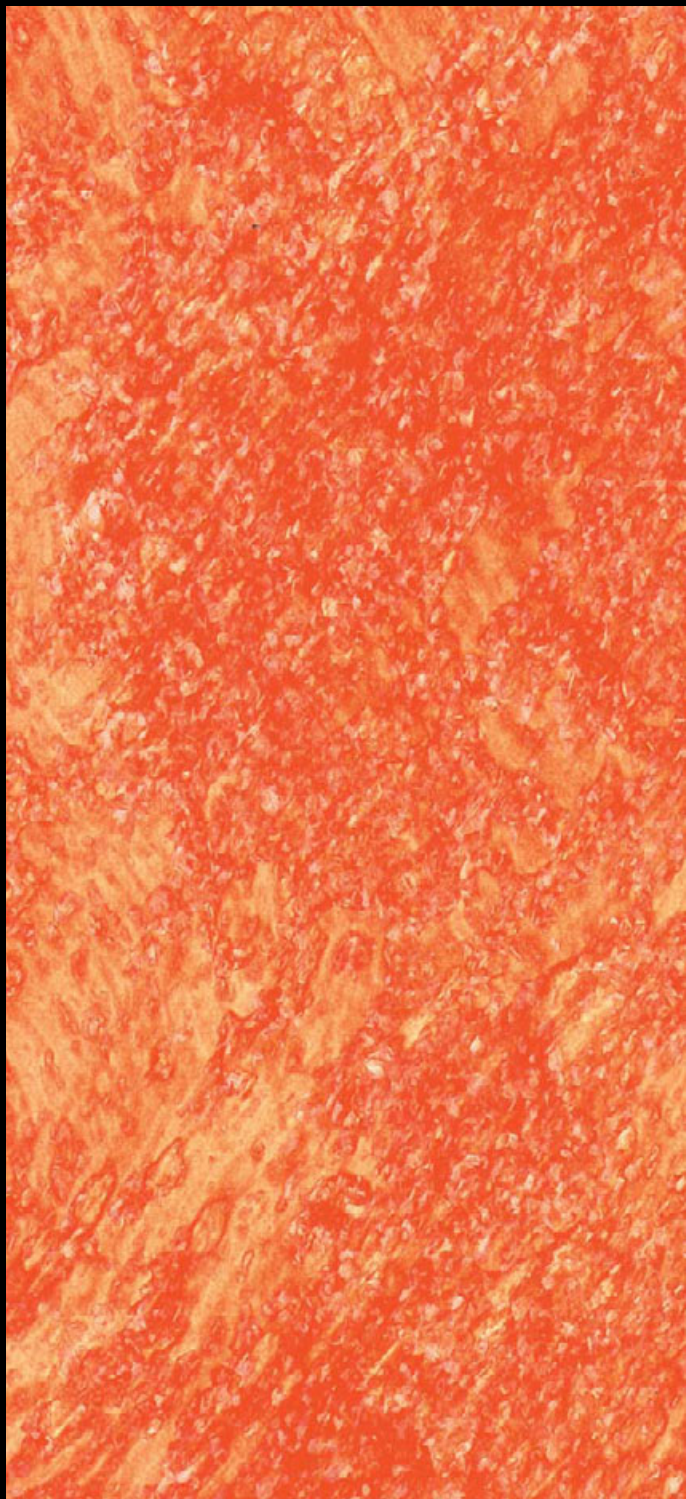


CYBERLUX:
Idrocolori acrilici
metallescenti
CYBERLUX:
Water-based acrylic
metallic colours

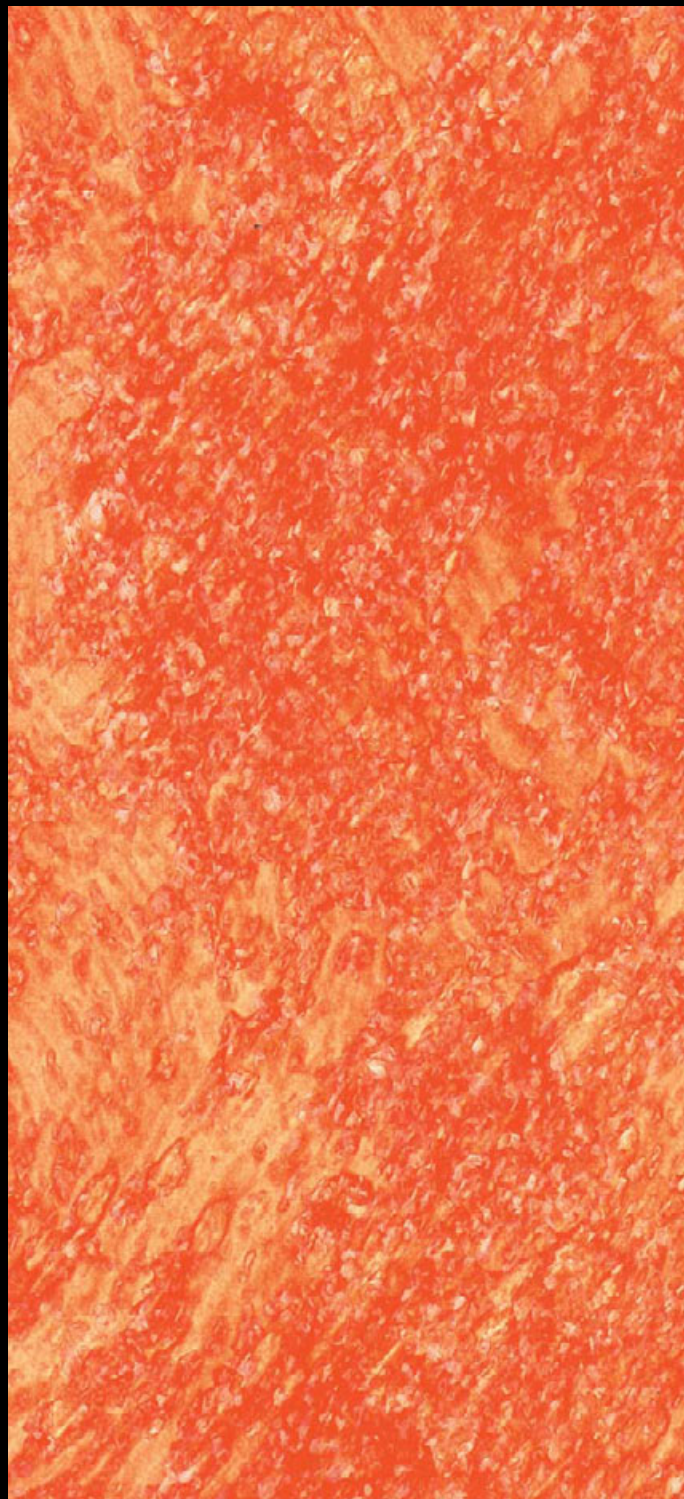
Confezioni:
60 ml, 500 ml.
Packaging:
60 ml, 500 ml.

Antiche Trame

*Suggerzioni cromatiche
ad effetto policromatico*



ANTICHE TRAME colore 25



ANTICHE TRAME colore 25 lucidato con DECORFINISH

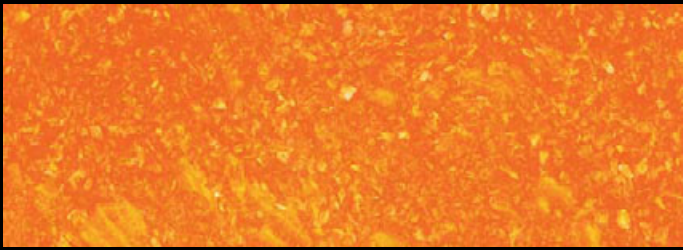
Tutte le tinte della cartella sono state realizzate miscelando flaconi di TOTOCOLOR e STABILCOLOR (i nostri coloranti universali) con confezioni di 2,5 litri di ANTICHE TRAME.

Tutte le tinte della cartella sono anche riproducibili con il sistema tintometrico UCIC "COLORDREAM".

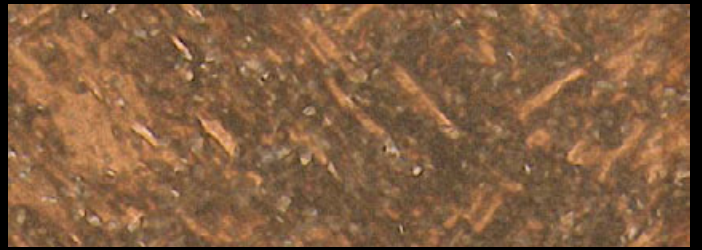
All the tints shown have been realized by adding TOTOCOLOR and STABILCOLOR (our universal colorants) in 2,5 litre-packages of ANTICHE TRAME.

All the tints shown can be also reproducible with the UCIC tinting system "COLORDREAM".

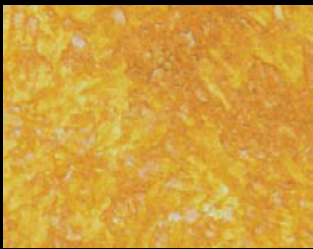
TUTTE LE TINTE SONO DA CONSIDERARSI PURAMENTE INDICATIVE - ALL THE TINTS ARE TO BE CONSIDERED AS APPROXIMATE



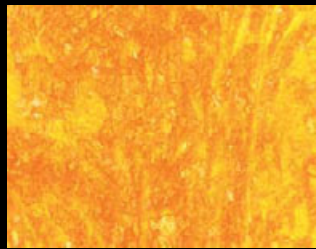
1 - 200 ml T25 + 15 ml T28



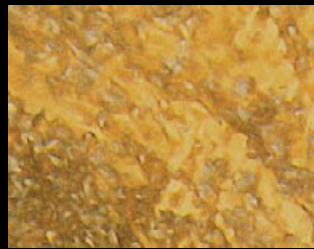
10 - 50 ml St3



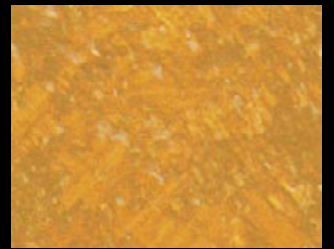
2 - 50 ml S1



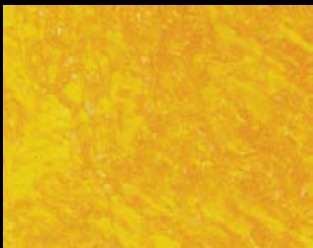
3 - 200 ml T25 + 15 ml T27



11 - 15 ml T34 + 15 ml T23



12 - 150 ml St1



4 - 200 ml T25 + 15 ml T21



5 - 50 ml T25 + 15 ml T21



13 - 50 ml T23 + 50 ml T26



14 - 30 ml T21 + 15 ml T25



6 - 200 ml T25



7 - 30 ml T34



15 - 15 ml T23



16 - 30 ml T23



8 - 15 ml T34



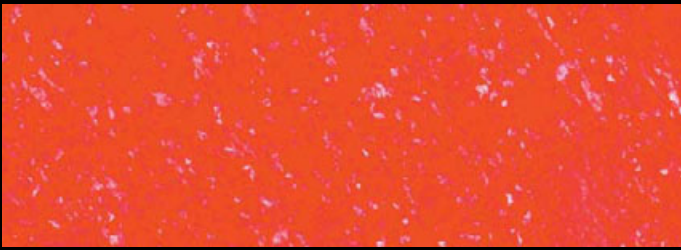
9 - 15 ml T26



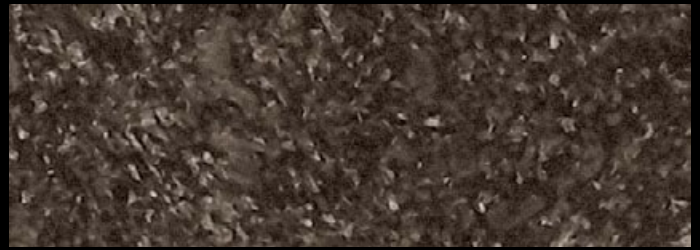
17 - 15 ml T21



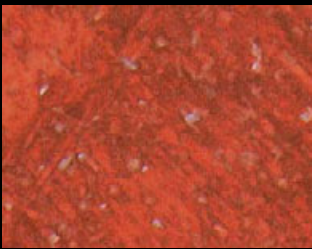
18 - 30 ml T21



19 - 100 ml T28 + 50 ml T25



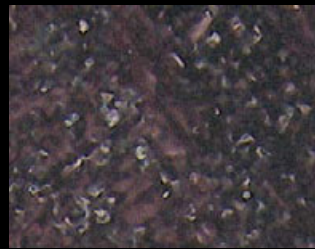
28 - 15 ml T24



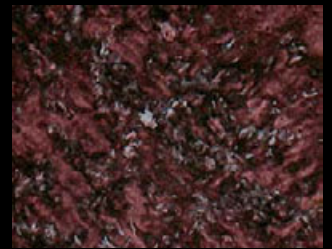
20 - 50 ml S2



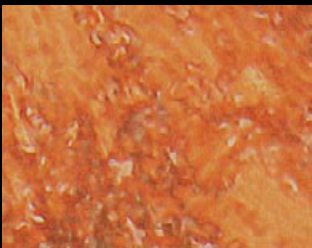
21 - 50 ml T28 + 30 ml T25



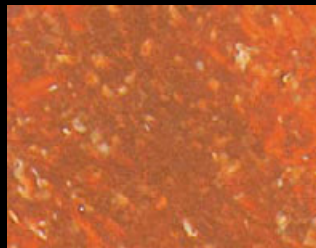
29 - 45 ml T29 + 15 ml T24



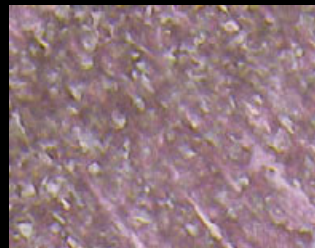
30 - 80 ml T28 + 15 ml T24



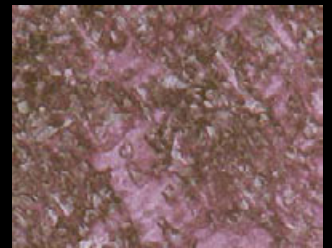
22 - 15 ml T22 + 30 ml T25 + 15 ml T28



23 - 50 ml S2 + 200 ml T25



31 - 15 ml T29



32 - 30 ml T29



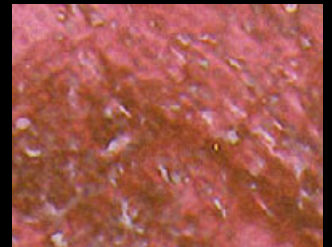
24 - 15 ml T27 + 15 ml T25



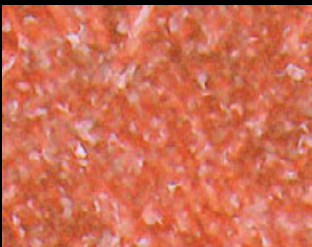
25 - 30 ml T27



33 - 30 ml T28



34 - 15 ml T29 + 30 ml T28



26 - 30 ml T28 + 15 ml T25



27 - 15 ml T22 + 15 ml T28



35 - 15 ml T28



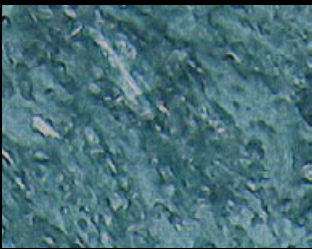
36 - 15 ml T22



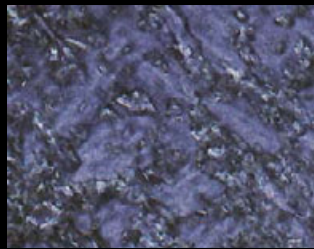
37 - 50 ml T30 + 15 ml T24



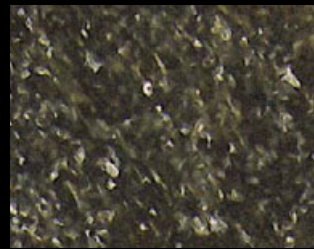
46 - 50 ml S5



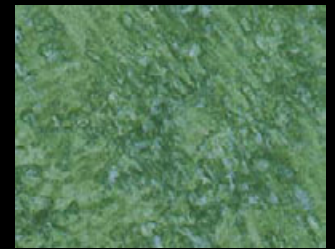
38 - 15 ml T30 + 15 ml T22



39 - 45 ml T29 + 15 ml T30



47 - 50 ml S6 + 15 ml T24



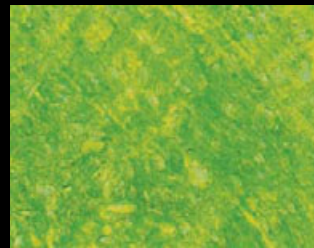
48 - 50 ml S6



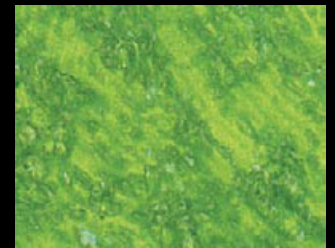
40 - 15 ml T29 + 15 ml T30



41 - 30 ml T29 + 30 ml T30



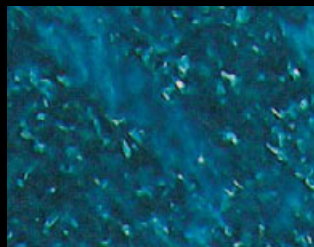
49 - 100 ml T26 + 15 ml T31



50 - 30 ml T32 + 150 ml T26



42 - 15 ml T30 + 15 ml T28



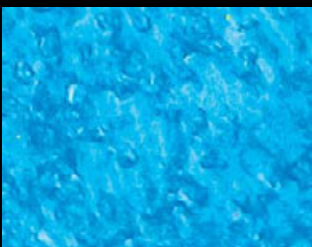
43 - 100 ml T30 + 50 ml S5



51 - 15 ml T32



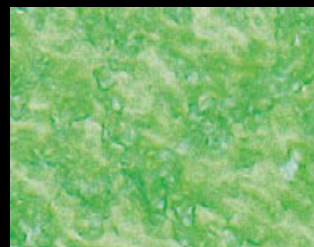
52 - 30 ml T32



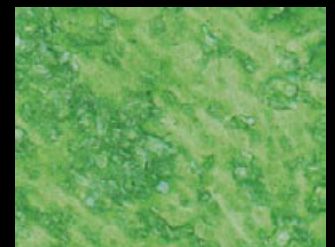
44 - 15 ml T30



45 - 30 ml T30



53 - 15 ml T31



54 - 30 ml T31

ANTICHE TRAME e' un rivestimento acrilico a base acquosa lavabile (2000 cicli UNI 10560) che, grazie al suo contenuto di materie prime selezionate, permette di ottenere delle splendide finiture decorative adatte sia ad ambienti classici che ad ambienti dal moderno design.

ANTICHE TRAME e' un prodotto di facile applicazione e adatto alla decorazione d'interni di ambienti di prestigio, di esercizi pubblici, di particolari ambienti domestici.

ANTICHE TRAME is an acrylic, water-based washable coating (2000 UNI 10560 cycles) that, thanks to its formulation based on selected raw materials, produces marvellous decorative finishes suitable for classic and modern environments.

ANTICHE TRAME is easy to apply and ideal to use for interior wall decoration of prestigious or public buildings or for household decorations.

CICLO APPLICATIVO

1)PREPARAZIONE DEI SUPPORTI

Muri perfettamente lisci: per ottenere risultati ottimali e' necessario pulire accuratamente la superficie da trattare, asportando le vecchie pitture non perfettamente aderenti e applicando una passata del fissativo acrilico per prodotti decorativi DECORPRIMER.

Muri imperfetti e con grosse irregolarita': e' consigliabile rasare.

APPLICATION INSTRUCTIONS

1)SURFACE PREPARATION

For smooth walls: to obtain a perfect final result, clean carefully the surface, removing any

old paints and any loose material (not perfectly adhered) and applying one coat of our acrylic sealing primer DECORPRIMER. For imperfect walls with evident irregularities: it is advisable to smooth the surface.

2)APPLICAZIONE DI DECORFONDO

(fondo acrilico universale ad effetto leggermente ruvido):

applicare tal quale in una mano con un rullo a pelo corto.

RENDIMENTO TEORICO

DI DECORFONDO: 10 mq/litro.

2)APPLICATION OF DECORFONDO

(universal acrylic sealing primer with rough effect):

apply DECORFONDO as supplied in one coat with a short-haired roller.

THEORETICAL COVERAGE OF DECORFONDO: 10 sqm/litre.

3)COLORAZIONE DI ANTICHE TRAME con i nostri coloranti universali TOTOCOLOR e/o STABILCOLOR.

La cartella tinte ANTICHE TRAME riproduce una parte delle centinaia di tinte ottenibili con questo sistema tintometrico portatile. Preparare la tonalita' desiderata come indicato nella cartella e mescolare con la spatola ed eventualmente con un mescolatore a bassa velocita' prima dell'applicazione.

Tutte le tinte della cartella sono state realizzate miscelando flaconi di TOTOCOLOR e/o STABILCOLOR con confezioni di 2,5 litri di ANTICHE TRAME.

Per ottenere effetti speciali metallici o perlato ANTICHE TRAME si puo' anche miscelare

con i nostri colori acrilici CYBERLUX (effetto metallico) o SPECTRA (effetto perlato).

3)TINTING METHODS FOR ANTICHE TRAME: with our universal colorants TOTOCOLOR and/or STABILCOLOR, this ANTICHE TRAME colour-card presents only a part of the numberless tints obtainable with this portable mixing system. Prepare the shade as indicated in the colour-card, then mix and stir with a spatula or mixer before the application. All the colours of the colour-card have been realized by adding TOTOCOLOR and/or STABILCOLOR to 2,5 litres-packages of ANTICHE TRAME.

For obtaining special metallic or pearlescent effects it is possible to mix ANTICHE TRAME with our acrylic colours CYBERLUX (for metallic effects) or SPECTRA (for pearlescent effects).

4)APPLICAZIONE DI ANTICHE TRAME

Quando DECORFONDO e' asciutto (consigliamo di attendere almeno 24 ore) applicare ANTICHE TRAME precedentemente colorato con il pennello UCIC (spalter) a tratti incrociati su una superficie di circa 1-2 metri quadri e regolarizzare la decorazione con il pennello scarico. Trascorsi 15-30 minuti, a seconda dell'assorbimento della parete, lasciare ANTICHE TRAME con l'apposita spatola di plastica UCIC.

Per un effetto piu' rustico si puo' anche non usare la spatola e allora si otterra' un effetto gofrato. Per ottenere una superficie brillante e superlavabile consigliamo di applicare il nostro lucidante protettivo DECORFINISH

sopra ANTICHE TRAME una volta ben asciutto.

4)APPLICATION OF ANTICHE TRAME: when DECORFONDO is completely dried (we suggest to wait at least 24 hours), apply ANTICHE TRAME previously coloured by UCIC brush (spalter) in irregular and crossed coats on a 1-2 sqm surface and then redefine the decoration by a less soaked brush.

After 15-30 minutes, according to the absorption of the wall smooth ANTICHE TRAME by UCIC plastic spatula; for a more country-style effect, it is possible not to use the spatula in order to achieve the "embossing effect".

To obtain a bright and washable surface, we suggest to apply our protective acrylic glossy varnish DECORFINISH directly on ANTICHE TRAME, once completely dried.

DATI TECNICI DI ANTICHE TRAME

RENDIMENTO TEORICO:

8 mq/litro.

PULIZIA ATTREZZI: acqua tiepida.

TEMPERATURA DI

STOCCAGGIO: + 5°C ÷ 35 °C.

CONFEZIONI: 2,5 litri.

TECHNICAL DATA OF ANTICHE TRAME

THEORETICAL COVERAGE:

8 sqm/litre.

TOOLS CLEANING: water.

STORAGE TEMPERATURE:

+5°C ÷ 35 °C.

PACKAGING: 2,5 litres.

TOTOCOLOR Flaconi di 100, 50 e 15 ml



STABILCOLOR Flaconi di 100 e 50 ml

