

Duecento



STILNOVO

l'arte del decorativo italiano



Duecento è un effetto di grande pregio decorativo. Il raffinato effetto metallizzato e l'ampia gamma di possibilità interpretative ottenibili con la colorazione e le tecniche applicative garantiscono eccellenti risultati nella decorazione di interni. Le superfici trattate con questo prodotto catturano i riflessi della luce e dell'oro donando agli ambienti forte personalità.



Italia, Toscana: Corrente L



Duecento base argento



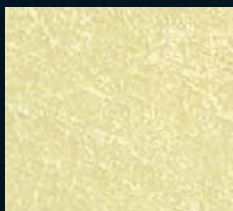
Duecento base oro



STILNOVO
l'arte del decorativo italiano



Letteraria del Duecento, Poesia



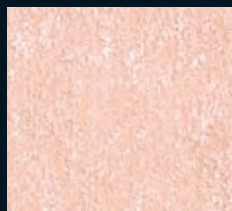
D.001



D.002



D.003



D.004



D.005



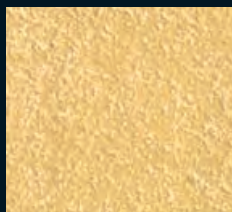
D.006



D.007



D.008



D.009



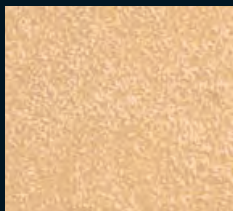
D.010



D.011



D.012



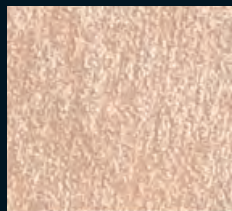
D.013



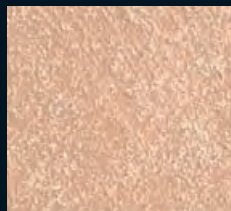
D.014



D.015



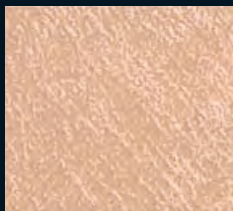
D.016



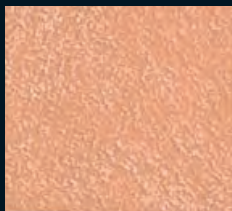
D.017



D.018



D.019



D.020



D.021



D.022



D.023



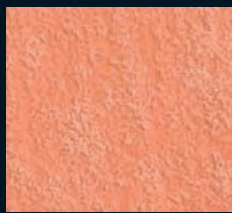
D.024



D.025



D.026



D.027



D.028



D.029



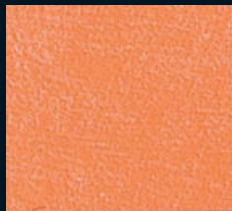
D.030



D.031



D.032



D.033



D.034



D.035



D.036

e Parole di Carattere Nobile



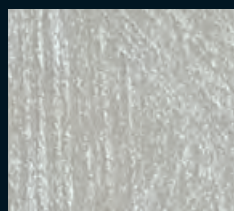
D.037



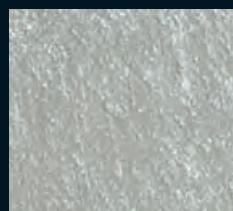
D.038



D.039



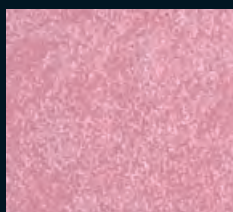
D.040



D.041



D.042



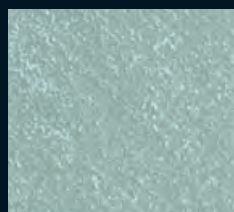
D.043



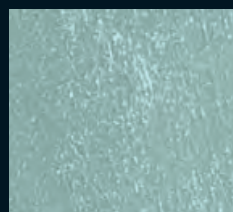
D.044



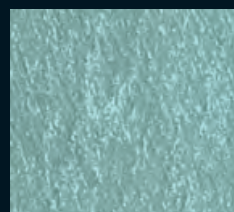
D.045



D.046



D.047



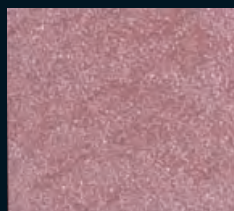
D.048



D.049



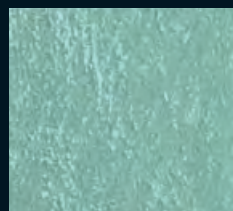
D.050



D.051



D.052



D.053



D.054



D.055



D.056



D.057



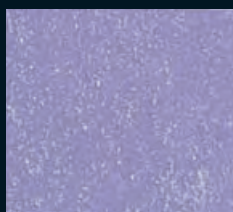
D.058



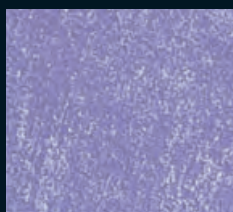
D.059



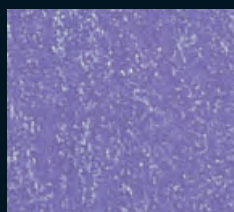
D.060



D.061



D.062



D.063



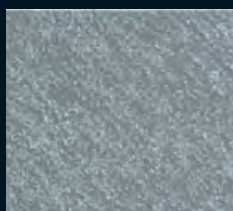
D.064



D.065



D.066



D.067



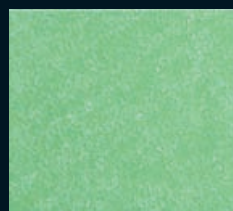
D.068



D.069



D.070



D.071



D.072

e Raffinato.

La presente cartella è di tipo fotografico, pertanto puramente indicativa.
Rappresenta una riproduzione delle reali applicazioni e ha il solo scopo di orientare alla scelta.
Non può essere oggetto di contestazione.
Per la scelta ottimale dei colori fare riferimento alla cartella con il prodotto applicato.



D.073



D.074



D.075



D.076



D.077



D.078



D.079



D.080



D.081



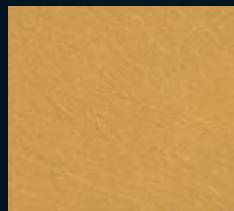
D.082



D.083



D.084



D.085



D.086



D.087



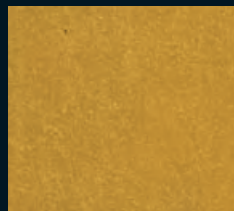
D.088



D.089



D.090



D.091



D.092



D.093



D.094



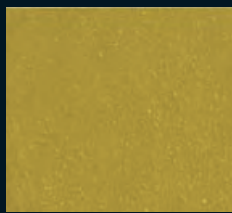
D.095



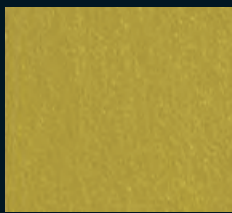
D.096



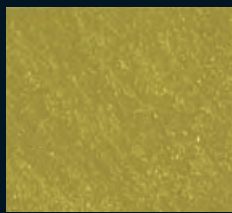
D.097



D.098



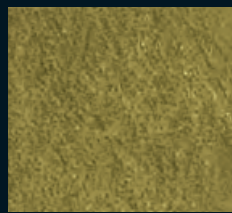
D.099



D.100



D.101



D.102



D.103



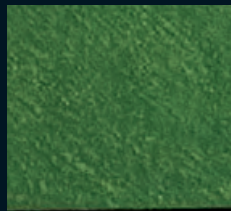
D.104



D.105



D.106



D.107



D.108

Duecento is a water based glazing with an elegant decorative effect. The innovative metallic aesthetic finish and the wide range of colours available and different application techniques guarantee excellent results in interior decoration. Treated surfaces capture the reflections of light and of the gold inserts conveying a determined personality to interiors.



 ITA

CARATTERISTICHE DEL PRODOTTO

Finitura decorativa all'acqua metallizzata per interni. Ruvida al tatto, è disponibile in base oro e base argento.

PREPARAZIONE DEL SUPPORTO


Per rendere l'effetto estetico finale uniforme è necessario regolare l'assorbimento del supporto applicando con pennello o rullo il prodotto FONDO LISCIO o il prodotto ruvido CARATTERE di Stilnovo.

APPLICAZIONE DEL PRODOTTO


IL PRODOTTO SI APPLICA IN 2 STRATI: intingendo il pennello "spalter" e passandolo a pennellate incrociate evitando riquadrature nette. Riprendere la lavorazione fino a raggiungere la parte appena trattata con l'attrezzo scarico in modo da evitare giunte evidenti ed antiestetiche. La quantità di materiale impiegato, la dimensione, la forma e l'intensità delle pennellate determinano l'effetto estetico finale.

DATI TECNICI

Resa indicativa: : 8-10 m²/L per strato. **Diluizione:** pronto all'uso. **Essiccazione:** secco al tatto: 1 ora; Ricopribile: 6-8 ore (i tempi possono variare in base alle condizioni ambientali).

 ENG

PRODUCT FEATURES

Metallized water based decorative finishing for interiors. Rough to touch, is available in gold base and silver base.

SURFACE PREPARATION


To make the final aesthetic effect uniform it is necessary to adjust the absorbency of the support by applying the smooth primer FONDO LISCIO or the rough product CARATTERE of the Stilnovo range by brush or roller.

APPLICATION OF THE PRODUCT


THE PRODUCTS MUST BE APPLIED IN 2 COATS: with "spalter" brush spreading the product crossing the strokes on the suitably prepared surface. Product quantity, form and intensity of the strokes create the decorative effect. The final aesthetic aspect depends on the quantity of product applied, the brush dimensions, the width and intensity of the strokes.

TECHNICAL DATA

Average spreading capacity: 8-10 m²/L. per coat. **Thinning:** ready to use. **Drying time:** Dry to touch: 1 hour; Can be overpainted after: 6-8 hours (time can change due the weather conditions).



STILNOVO
l'arte del decorativo italiano

PPG Univer S.p.a. - Via Monte Rosa, 7
28010 Cavallirio (Novara) - Italy
Tel. +39 0163 806.611 - Fax: +39 0163 806.696
www.stilnovodecorativo.it

